

An Energy-Aware WLAN Discovery Scheme for LTE HetNet[†]

Pravjyot Singh Deogun*, Arghyadip Roy**, *Student Member, IEEE*,
Abhay Karandikar**, *Member, IEEE*

Abstract

Recently, there has been significant interest in the integration and co-existence of Third Generation Partnership Project (3GPP) Long Term Evolution (LTE) with other Radio Access Technologies, like IEEE 802.11 Wireless Local Area Networks (WLANs). Although, the inter-working of IEEE 802.11 WLANs with 3GPP LTE has indicated enhanced network performance in the context of capacity and load balancing, the WLAN discovery scheme implemented in most of the commercially available smartphones is very inefficient and results in high battery drainage. In this paper, we have proposed an energy efficient WLAN discovery scheme for 3GPP LTE and IEEE 802.11 WLAN inter-working scenario. User Equipment (UE), in the proposed scheme, uses 3GPP network assistance along with the results of past channel scans, to optimally select the next channels to scan. Further, we have also developed an algorithm to accurately estimate the UE's mobility state, using 3GPP network signal strength patterns. We have implemented various discovery schemes in Android framework, to evaluate the performance of our proposed scheme against other solutions in the literature. Since, Android does not support selective scanning mode, we have implemented modules in Android to enable selective scanning. Further, we have also used simulation studies and justified the results using power consumption modeling. The results from the field experiments and simulations have shown high power savings using the proposed scanning scheme without any discovery performance deterioration.

Index Terms

WLAN discovery, heterogeneous network, channel scan, power consumption.

I. INTRODUCTION

The Third Generation Partnership Project (3GPP) Long Term Evolution (LTE) in the recent past has extensively laid its focus on the inter-working with other Radio Access Technologies (RATs), owing to limited spectrum availability and exponentially increasing data traffic. The operation in the unlicensed spectrum has specially attracted great interest, leading to the development of licensed-assisted access to unlicensed spectrum [2] and 3GPP System to Wireless Local Area Network (WLAN) Inter-working [3]. In 3GPP/WLAN inter-working, a user associated with a 3GPP LTE network can be allowed to steer/offload its data traffic through a selected IEEE 802.11 [4] based WLAN. This solution has been referred to as a mechanism to increase the overall capacity of the network, for small capital expenditure. Further, since most of the commercially available User Equipments (UEs) already support IEEE 802.11 compatible WLAN interfaces, the transition towards the inter-working technology, in the context of the user, may only require

[†]This paper is a substantially expanded and modified version of the work in [1].

*P. S. Deogun is with Samsung R&D Institute, Bangalore-560037, India, e-mail: ps.deogun@samsung.com. This work was performed when the author was working at IIT Bombay.

**A. Roy and A. Karandikar are with the Department of Electrical Engineering, Indian Institute of Technology Bombay, Mumbai-400076, India, e-mail: {arghyadip,karandi}@ee.iitb.ac.in.

software up-gradation. Hence, this proposal is widely popular with 3GPP network operators and UE manufacturers alike.

Despite well defined specifications of IEEE 802.11 WLAN and 3GPP LTE, the optimal resource utilization for the inter-working scenario still requires tight integration in the context of cross-network information provision and parameter estimation. While, current research efforts towards achieving this objective are mainly focused on throughput maximization [5] and traffic steering policies [6], very little emphasis has been laid on the network discovery aspects of the inter-working. In this paper, we specifically concentrate on the energy efficient discovery of the IEEE 802.11 WLANs.

The discovery process of WLANs comprises of searching suitable WLANs, which satisfy certain Quality of Service (QoS) criteria, by scanning a subset of the frequency channels supported by the UE's WLAN interface. Existing WLAN discovery scheme, implemented in most of the commercially available UEs, involves scanning all the supported channels of the WLAN interface at regular intervals of time. Each scan operation may consist of scanning 11 channels consecutively for a UE operating in 2.4 GHz band and greater than 20 channels for a UE supporting both 2.4 GHz and 5 GHz band. The power consumption for the channel scan may range from 300 to 1400 mW, based on the UE characteristics and the mode of scanning [7]. Since, increasing the number of channels to be scanned leads to higher power consumption of the discovery scheme, the battery life of the UE may suffer as a consequence. Studies, [8], have shown that the existing discovery scheme may contribute upto 20% of the overall power consumption of a UE. As, high fraction of UEs today support both 2.4 GHz and 5 GHz frequency band, there is a need to reduce the number of channel scans to improve the overall user experience.

Since, IEEE 802.11 based WLANs operate in the unlicensed spectrum, the operator deployed WLANs co-exist with the privately deployed WLANs. Moreover, the number of privately deployed WLANs is expected to outnumber the operator deployed WLANs, due to high penetration of IEEE 802.11 WLANs. Hence, to mitigate co-channel interference, the operator deployed WLANs may occupy a small fraction of frequency channels in the unlicensed spectrum for each location. Therefore, for such a case, the discovery schemes implemented in commercial UEs result in sub-optimal performance and require further optimization in the context of scan scheduling and channel selection. We aim to reduce the number of channel scans without compromising the WLAN offload opportunities for the user.

In this paper, we have proposed an energy efficient IEEE 802.11 WLAN discovery scheme. Further, we have performed extensive field experiments on Android platform, along with simulation and analytical studies, to analyze the performance of our discovery scheme. Using the experimental results, we have shown the performance gains of our proposed scheme in comparison to other solutions in the literature.

A. *Related Work*

Different solutions have been proposed to address the problem of designing efficient neighbor discovery schemes in the context of sensor and mobile wireless networks. Existing neighbor discovery schemes can be divided into two categories, namely probabilistic and deterministic protocols. The basic idea behind probabilistic schemes, [9], [10], is letting each node in a network transmit, receive or sleep with a certain probability in each slot. In deterministic procedures [11], [12], a fixed active-sleep schedule is involved for each node.

Other solutions proposed in the literature can be classified based on the optimization objective undertaken. One set of proposals targets the optimization of the time interval between successive

scan operations, using different criteria. The authors, in [13] and [14], determine the interval based on the user speed and the WLAN spatial density. The scan operations are performed more frequently as the WLAN spatial density increases. The scheme is expected to reduce the power consumption for small values of WLAN spatial density, but may not provide substantial benefits as the density increases. Other solutions, [15], [16], rely on position and mobility information of the UE, for optimal scan scheduling. The underlying approach of these solutions is to trigger the scan operation whenever the scheme detects UE motion or WLAN proximity. While, these schemes perform very few scan operations for a static UE, the power consumption is likely to increase rapidly as the speed of the UE increases.

The second set of solutions [17]–[19] attempts to reduce the time spent in the active state of WLAN interface of a UE during a channel scan, thereby, decreasing the power consumption. The authors, in [17], determine minimum values for `MinChannelTime` and `MaxChannelTime`, without affecting the discovery performance. The scheme, in [19], optimizes the number of probe request transmissions for each channel, based on the previous channel activity. Although, these solutions lead to lower power consumption, they do not address the issue of energy wastage due to channel scans which do not provide potential offload opportunities for the UE.

The third set of proposals [8], [20]–[23] targets the number of channels scanned during each scan operation. The scheme in [20] places more emphasis on the non-overlapping frequency channels and scans selective overlapping channels. The methodology of preferring non-overlapping channels, however, may not provide sufficient gain for the 5 GHz band, where all channels are non-overlapping. A 3GPP network assisted scheme is proposed in [22], where, the UE selectively scans the operating channels of WLANs deployed within the coverage of current 3GPP serving base station, while, the scheme, described in [23], also takes into account the position information of the UE and the deployed WLANs, for efficient channel selection. While, the given solutions have shown significant performance improvements, none of the works has been able to validate the results using actual UE measurements.

The solutions described above, require mobility information of the UE. Some works, [15], [23], have explicitly used the Geo-spatial Positioning System (GPS) module of the UE, for mobility estimation. While, the GPS readings may provide accurate mobility information, the GPS module operation itself is a power intensive task. Other works [8], [22], [24], [25] explore more energy aware sources for mobility estimation. In [22], the mobility of the UE is estimated by using accelerometer readings. 3GPP specifications, [24], describe a mobility state estimation scheme which is further enhanced in [25], to address the issues arising from varying cell sizes and handover failures. But, the solution only provides three states of mobility, which is not pertinent in many scenarios.

UE position estimation solutions [26], [27] based on 3GPP network signal strength require accurate knowledge of path loss characteristics and extensive training data set for each location. The authors, in [8], have proposed relatively simple algorithm for mobility estimation. The algorithm uses the count of number of base stations for which signal strength crosses a specific threshold. The authors address the issue of signal strength fluctuations by computing the mean and variance of signal strength for each location, which is then used for mobility estimation. The solution assumes availability of significant data for variance computation at each location, which is not possible for a high speed user. Hence, an enhanced solution is required for mobility estimation of the UE, which also takes into account the signal strength fluctuations observed by a mobile UE.

B. Our Contributions

In this paper, we have proposed an energy efficient IEEE 802.11 WLAN discovery scheme, which uses 3GPP network assistance along with the results of past channel scans, to optimally select the next channels to scan. We have also developed a mobility estimation procedure, based on the 3GPP network signal strength variation patterns, to accurately detect the UE's mobility using a short decision interval. Although, we have used the proposed mobility estimation procedure for WLAN scanning, any other mobility estimation procedure from the literature can be used for the purpose. Note that, the focus is more on energy efficient discovery of IEEE 802.11 WLANs rather than on mobility estimation procedure.

We have implemented various discovery schemes in Android framework, for accurate performance comparison of our proposed scheme against other solutions in the literature. Since, Android does not support selective scanning mode, i.e, scanning a subset of frequency channels supported by the UE's WLAN interface, we have also developed modules for selective scanning support in Android. We have used Google Nexus 5 cell phone as an example but our algorithm can be implemented on any Android phone and is expected to produce a similar performance. The power consumption is monitored using an Android profiler tool. Further, we have used different mobility and WLAN deployment scenarios to investigate the performance gains of our proposed scheme. Note that, while most works in the literature have demonstrated the performance of their schemes using simulations [1], [22], [23], no published literature, to the best of our knowledge, has characterized the power consumption and discovery performance of a real UE for the case of a mobile user.

The rest of the paper is organized as follows. Section II gives an overview of the IEEE 802.11 based scanning procedure and 3GPP network assisted offloading. Section III discusses the proposed discovery scheme. Section IV contains the system model and the experimentation results. Finally, Section V concludes the paper.

II. WLAN SCANNING AND OFFLOAD ESSENTIALS

A. IEEE 802.11 WLAN Scanning Procedure

UE's WLAN interface, whether in disassociated or associated state, scans all the supported IEEE 802.11 frequency channels at regular intervals of time, called the scan interval. Android 5.0 sets the default value of scan interval as 15 seconds for disassociated state and 20 seconds for associated state of the WLAN interface. While, small values of scan interval results in faster discovery of WLANs, it may significantly reduce the battery life of the UE. Each channel scan can be carried out in active or passive mode [4]. In passive mode, the UE keeps its WLAN interface in *Active Listen* state, to receive the beacon frames transmitted by the WLAN Access Points (WAPs). Since, the time interval between two successive beacon frames from a given WAP is around 100 ms, the UE has to keep its WLAN interface in *Active Listen* state for a minimum of this duration in order to receive beacons from all WAPs within its transmission range. The active scanning mode involves the UE broadcasting probe requests and keeping the WLAN interface in *Active Listen* state for a minimum time duration, denoted by *MinChannelTime*, to receive at least one response from a nearby WAP. The UE extends the duration to *MaxChannelTime*, if atleast one probe response is received by the WLAN interface. This is done to ensure that the UE may receive probe responses from other WAPs, which may have been delayed due to congestion in the network. The active scanning mode is significantly faster compared to the passive mode, because of lower values of *MinChannelTime* and *MaxChannelTime*. This leads to higher power consumption values for passive scanning mode.

B. 3GPP Assisted Vertical Handover Procedure

3GPP, in [28], [29], has specified the policies for traffic steering/offload procedure between a 3GPP network and IEEE 802.11 based WLAN. The policies defined are mainly focused on the signal strength and traffic load of the respective networks. These are indicated by parameters such as Received Signal Reference Power (RSRP) of 3GPP serving base station and Received Signal Strength Indicator (RSSI) and channel utilization for IEEE 802.11 based WLANs. We have concentrated our study on WLAN RSSI threshold criteria. The traffic steering policy considered in this paper assumes that UE is eligible for initiating offload procedure, if, the observed RSSI value for a WAP is higher than S_{enter} .

In order to achieve fast discovery of WLANs, 3GPP network provides operational attributes like operating channel and geo-spatial coordinates of the WAPs deployed by the network operator [30]. This information is retrieved by the UE by sending a network query along with its current position to the Access Network Discovery and Selection Function (ANDSF) server. The position of the UE can be indicated using either serving 3GPP base station identification code or by stating explicit geo-spatial coordinates of the UE. The UE can also provide identification of a detected WAP, deployed by the 3GPP network operator, as a position reference.

III. WLAN-AWARE DISCOVERY SCHEME

The proposed solution, WLAN-aware discovery scheme, comprises of three steps: Position Estimation, Initial Channel Selection and Channel Elimination. The entire flow of the scheme is depicted in Fig 1. The UE, in disassociated state of the WLAN interface, initiates the process

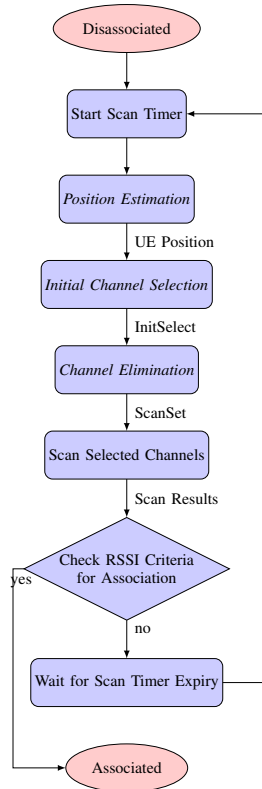


Fig. 1: WLAN-aware discovery scheme flowchart.

by setting a scan timer. The timer is used to trigger scanning at regular intervals of time. After setting the scan timer, the UE executes Position Estimation to determine the geo-spatial coordinates of the UE. It also estimates the distance traveled by the UE between successive scans, using 3GPP network signal strength measurements, which is used in Initial Channel Selection and Channel Elimination. Initial Channel Selection, then, determines the WAPs that lie within a certain proximity of the UE, and constructs a list of operating channels (*InitSelect*) of the selected WAPs. The proximity of a WAP is determined by computing the distance between the UE's current position estimate and the position of the given WAP. Channel Elimination prepares a list of frequency channels (*ScanSet*), which is a subset of *InitSelect*. The elimination criteria is based on the WLAN offload policy, and exploits the results of previous scan operations.

A single scan operation comprises of scanning the channels included in *ScanSet* by changing the WLAN interface to *Active* state. After scanning the channels in *ScanSet*, if the UE is able to discover a WAP satisfying the offload RSSI criteria, the UE triggers the association procedure with the selected WAP, otherwise, it changes its WLAN interface to *Sleep* state. The UE does not perform any further scanning until the scan timer expires, after which the UE re-initiates the same procedure.

A. Position Estimation

Position Estimation comprises of determining the geo-spatial coordinates of the UE. We use the results of the previous scan operations to determine UE's geo-spatial coordinates and hence, the procedure has negligible impact on the power consumption of the discovery scheme. We also monitor the distance traveled by the UE between successive scan operations, which is used to indicate the UE's position error due to mobility.

1) *Mobility Estimation*: Let n^{th} instance of the scan operation be initiated at time t_n . To estimate the mobility state of the UE between $(n-1)^{th}$ and n^{th} scan operation, we compute the mean (\bar{s}_n^i) and standard deviation (σ_n^i) of the signal strength values obtained between time instances t_{n-1} and t_n , for each base station i . We only concentrate on classification of two mobility states, i.e., a static user (S_{stat}) and a mobile user (S_{mob}). Since, our focus is on pedestrian mobility scenario, we have determined the mobility estimation parameters of S_{mob} state pertaining to a user traveling with a speed of 1 m/s. Hence, all users with speed greater than or equal to 1 m/s are considered as mobile users. Let ϕ_n^i be defined as,

$$\phi_n^i = |\bar{s}_n^i - \bar{s}_{n-1}^i|.$$

Since, the values of \bar{s}_n^i , ϕ_n^i and σ_n^i vary with n and mobility state of the UE, we can determine their probability distributions. The probability distribution for the given parameters can be determined by collecting extensive 3GPP network signal strength values for each mobility state of the UE. Now, using the values of ϕ_n^i and σ_n^i , we determine a metric Δ_n , given by,

$$\Delta_n = \frac{\sum_{i=1}^{N_{bs}} (e^{-\phi_n^i/\phi_0} + e^{-\sigma_n^i/\sigma_0})}{2N_{bs}}, \quad (1)$$

where, N_{bs} denotes the number of base stations observed during interval t_{n-1} to t_n . The values of ϕ_0 and σ_0 are determined using the probability distributions of ϕ_n^i and σ_n^i for each mobility state of the UE. Let ϕ_{50} and σ_{50} correspond to the values of ϕ_n^i and σ_n^i , respectively, for which the probability of UE being in S_{stat} is 50%. The values for ϕ_0 and σ_0 are then computed as $\phi_0 = 1.44 * \phi_{50}$ and $\sigma_0 = 1.44 * \sigma_{50}$. This is done to ensure that the solutions of $e^{-\phi_n^i/\phi_0} = 0.5$ and $e^{-\sigma_n^i/\sigma_0} = 0.5$, correspond to 50% probability of UE being in state S_{stat} .

In Equation 1, we have used exponential metric as it has been found to give good estimates of mobility through exhaustive simulations and field experiments. Moreover, fading is the predominant cause of signal strength variation between consecutive scan instances for a pedestrian mobility scenario. Since, shadowing variation and fast fading components are generally approximated as log normal and Rayleigh distribution, respectively, the probability distribution of signal strength variation is likely to follow an exponential trend.

The mobility state of the UE is determined as static (S_{stat}) if the value of Δ_n is greater than 0.5, otherwise, the UE is classified as mobile (S_{mob}). The distance traveled by the UE, between $(n-1)^{th}$ and n^{th} scan operation, is determined as,

$$D_n = \begin{cases} (t_n - t_{n-1}), & \text{if } \Delta_n \leq 0.5, \\ 0, & \text{if } \Delta_n > 0.5. \end{cases}$$

2) *Position Update Procedure*: Let the geo-spatial coordinates of the UE at $(n-1)^{th}$ scan operation be denoted by Pos_{n-1} and its corresponding error term by Δ_{n-1} . As described in Algorithm 1, the UE selects the WAP with the maximum observed RSSI, among the set of WAPs discovered in $(n-1)^{th}$ scan operation. The UE, then, estimates its distance from the selected WAP, denoted by Δ_{wap} , using the RSSI value of the selected WAP and a known path loss model. If Δ_{wap} is less than Δ_{n-1} , the UE updates its geo-spatial coordinates to the position of the selected WAP, denoted by Pos_{wap} . The UE also updates the position error term (Δ_n) to the summation of Δ_{wap} and D_n . Here, D_n represents the distance traveled by the UE between $(n-1)^{th}$ and n^{th} scan operation. The value of D_n is determined by the Mobility Estimation procedure, as explained above. If the value of Δ_{wap} is greater than Δ_{n-1} , the updated position error term (Δ_n) is set as the summation of Δ_{n-1} and D_n . The geo-spatial coordinates of the UE is kept unchanged for this case.

Algorithm 1 Position Update Procedure

- 1: $Disc_{n-1}$: WAPs discovered in $(n-1)^{th}$ scan operation
 - 2: $wap \leftarrow$ Find WAP with maximum RSSI in $Disc_{n-1}$
 - 3: $Pos_{wap} \leftarrow$ Geo-spatial coordinates of wap
 - 4: $\Delta_{wap} \leftarrow$ Distance between wap and UE based on RSSI
 - 5: **if** $\Delta_{n-1} > \Delta_{wap}$ **then**
 - 6: $Pos_n \leftarrow Pos_{wap}$
 - 7: $\Delta_n \leftarrow \Delta_{wap} + D_n$
 - 8: **else**
 - 9: $Pos_n \leftarrow Pos_{n-1}$
 - 10: $\Delta_n \leftarrow \Delta_{n-1} + D_n$
 - 11: **end if**
-

If the GPS coordinates of the UE are available, the UE sets its position and error term as the geo-spatial coordinates and error values provided by the GPS module, respectively.

B. Initial Channel Selection

In this stage, the UE constructs a list ($InitSelect$) of operating channels of the WAPs deployed within the serving 3GPP base station, such that, the UE is within the transmission range of the selected WAPs. If the transmission range of the deployed WAPs is considered to be D_r , then,

Algorithm 2 Initial Channel Selection

```

1: ServSet : List of WAPs within serving 3GPP site
2: for each wap in ServSet do
3:    $D_{wap} \leftarrow$  Distance between wap and UE
4:    $f_{wap} \leftarrow$  Operating channel of wap
5:   if  $D_{wap} < D_r + \Delta_n$  then
6:     Add  $f_{wap}$  to InitSelect
7:   end if
8: end for
9: Return InitSelect

```

Algorithm 3 Channel Elimination

```

1: for each  $f_w$  in supported channels do
2:   Increment  $D[f_w]$  by  $D_n$ 
3:    $S[f_w] \leftarrow$  Maximum RSSI in previous scan of  $f_w$ 
4: end for
5: for each  $f$  in InitSelect do
6:   if  $S[f] \geq S_{high}$  then
7:     Add  $f$  to ScanSet
8:   else if  $S[f] < S_{high}$  and  $D[f] > D_1$  then
9:     Add  $f$  to ScanSet
10:  else if  $S[f] = NaN$  and  $D[f] > D_2$  then
11:    Add  $f$  to ScanSet
12:  end if
13: end for
14: for each  $f$  in ScanSet do
15:    $D[f] \leftarrow 0$ 
16: end for
17: Return ScanSet

```

the UE selects those WAPs whose distances from the current estimated position of the UE are less than $D_r + \Delta_n$. The position error is incorporated to accommodate the scenario, where, the position error component is significantly large due to infrequent position updates. The position information of the deployed WAPs can be obtained by the UE by querying the ANDSF server. The procedure for Initial Channel Selection is shown in Algorithm 2.

C. Channel Elimination

For each frequency channel (f_w) supported by the WLAN interface, the UE stores an associated RSSI value ($S[f_w]$), which is the maximum RSSI observed by the UE in the previous scan instance of the given channel. The UE also maintains a distance metric ($D[f_w]$), indicating the distance traveled by the UE from the time the channel f_w was last scanned. The procedure is initiated by incrementing the value of $D[f_w]$ for each channel by D_n , i.e., the distance traveled by the UE between $(n - 1)^{th}$ and n^{th} scan operation. Now, for each channel (f) included in *InitSelect*, if $S[f]$ is greater than S_{high} , the channel is added to *ScanSet*. Otherwise, if $S[f]$

is less than S_{high} , the channel is included in $ScanSet$, only if the distance traveled by the UE since the last scan of the given channel ($D[f]$) is greater than a threshold D_1 . Similarly, if the value of $S[f]$ is not available, i.e., no WAP is detected in the previous scan of the channel f , the channel is added to $ScanSet$, if its distance metric $D[f]$ is higher than D_2 . Here, $D_2 > D_1$ to ensure that channels, where WLAN activity is detected, are scanned more frequently. The value of S_{high} is set higher than S_{enter} , i.e., offload RSSI criteria, such that the signal fluctuations due to fading are accounted in the difference. Finally, for the frequency channels present in $ScanSet$, the value of $D[f]$ is set as zero. The procedure for Channel Elimination is shown in Algorithm 3.

IV. EXPERIMENTS AND RESULTS

A. Experimentation Setup

1) *Implementing Selective Channel Scanning:* We have used Google Nexus 5 cell phone as the UE. Nexus 5 employs Broadcom bcm4339 WLAN interface. The choice of Nexus 5 was dictated due to the support of Android Open Source Project (AOSP) source building for customized scan implementation. We have used custom built image of Android version 5.0.2 for the UE operation.

The current version of Android 5.0 Application Programming Interface (API) does not support selective scanning mode, i.e, scanning a user configured list of frequency channels. Hence, our primary challenge was to modify the implementations of AOSP source, to support the selective channel scanning mode. This is a non-trivial task, since, it requires careful consideration of the native operating system procedures for different states of the WLAN interface.

Fig 2 illustrates the various components which are involved in the WLAN scanning procedure and the corresponding procedure calls. As, the discovery schemes may require information from telephony as well as the GPS module, the schemes are implemented in the Java framework which provides interface to different UE components. The scan procedure, in the Java framework, is initiated in *WifiManager* module, which provides interface to the user for the management of the connections between the UE and the WLANs. The user invokes *startScan* routine of *WifiManager* to initiate the scan operation, which makes successive calls to *WifiStateMachine* and *wpaSupplicant*, before invoking the device driver of the WLAN interface. *WifiStateMachine* implements the scanning and connection modules for different states of the WLAN interface and *wpaSupplicant* communicates and sends commands to the WLAN interface driver.

Although, *WifiManager* does not support selective scanning mode, *wpaSupplicant* driver provides API for scanning user configured channels, which can be called using the Java framework of Android. Hence, we have implemented modules in *WifiManager* and *WifiStateMachine* to incorporate the functionality of selective scanning mode. Also, as *WifiStateMachine* implements its own scheduling algorithm for scan operations, we have disabled the native scan procedure of Android.

An Android device that is left idle quickly falls asleep, to avoid battery drainage, leaving all the running applications in a standby mode. User applications use an Android system service called wake lock, to ensure uninterrupted operation. Wake lock service selectively keeps the CPU on for the time interval it is held by an application. However, Android's *ActivityManagerService* terminates any application which holds the wake lock for a duration greater than a specific threshold. Since, our analysis required elongated background service, we have modified the *ActivityManagerService* implementation to disable the process termination routine for the application context of the discovery schemes.

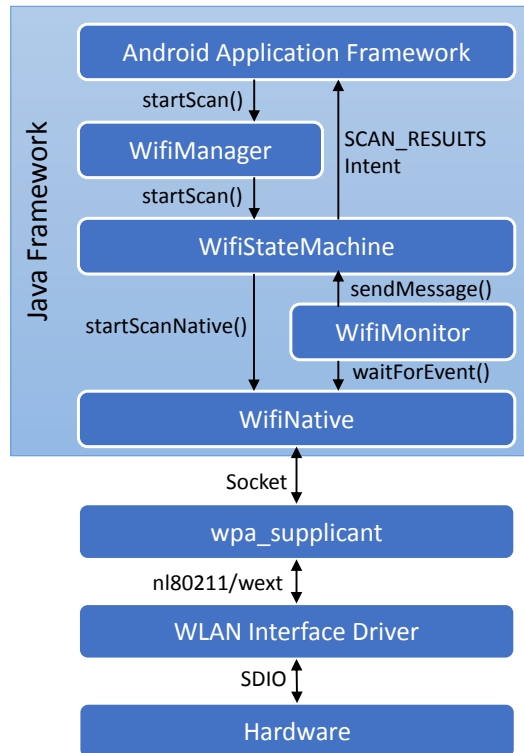


Fig. 2: Android WLAN scanning framework.

2) *Power Consumption Profiling:* While, the inbuilt fuel gauge of Google Nexus 5 provides accurate readings when determining battery state-of-charge over a long period of time, i.e., greater than 5 hrs, the error produced due to low resolution of fuel gauge readings is not acceptable for shorter time span of operation. Hence, Qualcomm Trepan Analyzer [31], which is a power monitoring/profiler tool, is used to analyze the power consumption of the implemented discovery schemes. The power consumption readings from the profiler are decremented by the power consumption values of the baseline measurement, where, only Trepan Analyzer executes in the background with no other activity in running state. Trepan Analyzer is calibrated for Nexus 5 power consumption and therefore, can provide useful insights on the power savings of discovery schemes.

3) *WAP Deployment Topology:* IIT Bombay campus wide WAP deployment has been used as an experimental testbed, for discovery analysis. We have selected 100 WAPs for our assessment. Since, most of the WAPs are deployed inside the campus buildings, we have selected those WAPs such that an outdoor UE experiences high RSSI from them. Fig 3 illustrates the WAP deployment topology within the campus. For field experiments, we have considered four scenarios where from the 100 WAPs, 10, 20, 50 and all the 100 WAPs, respectively, are randomly selected.

B. Mobility State Estimation Results

We have performed field experiments for different mobility scenarios, i.e. indoor moving user, indoor static user, outdoor moving user and outdoor static user, and compared the results of our proposed mobility estimation scheme against the scheme defined in [8], which we call as

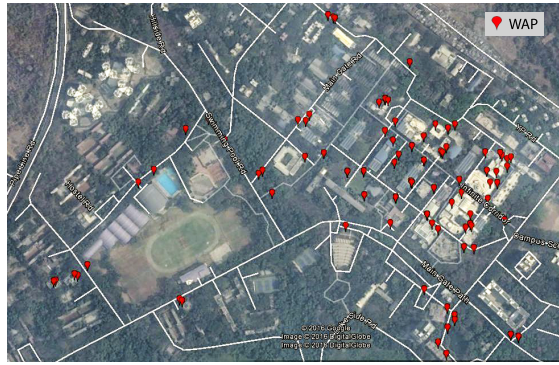


Fig. 3: WAP deployment.

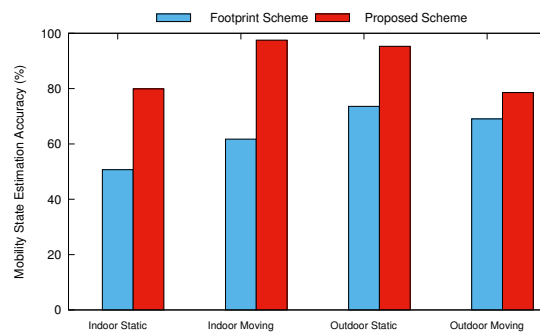


Fig. 4: Mobility State Estimation accuracy for different schemes.

Footprint scheme. For a moving user experimentation setup, the user moves with an approximate speed of 1 m/s continuously for a minimum duration of 1 minute per iteration. Mobility state estimation results for various such iterations are compiled to compute average statistics. Similar procedure is followed for the static user. Fig 4 shows the mobility state estimation accuracy for different schemes and mobility scenarios. The proposed mobility state estimation scheme outperforms the Footprint scheme in all the mobility scenarios.

Note that, the accuracy of both the mobility schemes is not as good for the Indoor Static and Outdoor Moving scenarios compared to the other two scenarios. For Indoor Static scenario, the user experiences significant signal strength variation even when static, due to penetration losses and pronounced effect of multi-path fading. Hence, this fluctuation may result in decreased accuracy of mobility state estimation. While, for Outdoor Moving scenario, the signal strength variation is not as high as compared to Indoor Moving scenario, which results in user being estimated as static in a number of cases.

C. WLAN Scanning Results and Observations

We have used test cases with different user mobility routes to analyze the performance of different discovery schemes for continuous user mobility. The analysis is performed for the results obtained from the compilation of all the test cases. We have analyzed the performance of the discovery schemes using the previously described WAP deployment scenarios. Table I illustrates the parameter values used in the field experiments. For field experiments, the user travels with the

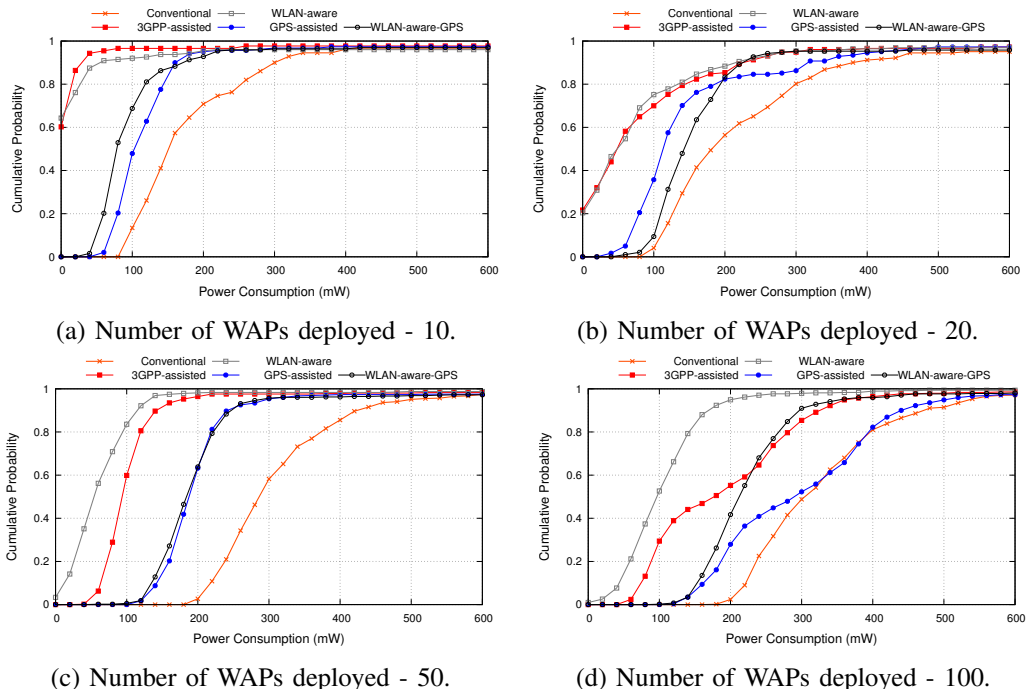


Fig. 5: Cumulative probability distribution of UE power consumption in mW, for different discovery schemes and WAP density scenarios. The power consumption values are obtained for each scan interval.

TABLE I: Field Experiment Parameters.

Parameter	Description	Value
v	User Speed	1 m/s
T_s	Scan Interval	10 sec
S_{enter}	Offload RSSI criteria	-75 dBm
D_r	Threshold for Initial Channel Selection	100 m
S_{high}	RSSI Threshold for Channel Elimination	-85 dBm
D_1, D_2	Distance Thresholds for Channel Elimination	10, 20 m

speed of 1 m/s. Each observation set contains results obtained from field experiments conducted for a duration of 2 hrs along different mobility routes. We have analyzed the following discovery schemes:

- 1) Conventional Scheme: UE scans all the channels supported by the WLAN interface, in each scan operation.
- 2) 3GPP-assisted Scheme: UE scans only the operating channels of the WAPs deployed within the coverage of 3GPP serving base station, in each scan operation. The channel information is provided by the 3GPP network itself.
- 3) GPS-assisted Scheme: UE scans only the operating channels of the WAPs deployed within D_r distance from the current UE's position in each scan operation.
- 4) Proposed WLAN-aware Scheme: WLAN-aware discovery scheme without GPS assistance.

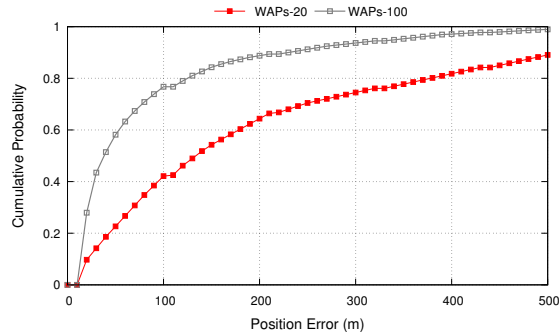


Fig. 6: Cumulative probability distribution of position error component of WLAN-aware scheme.

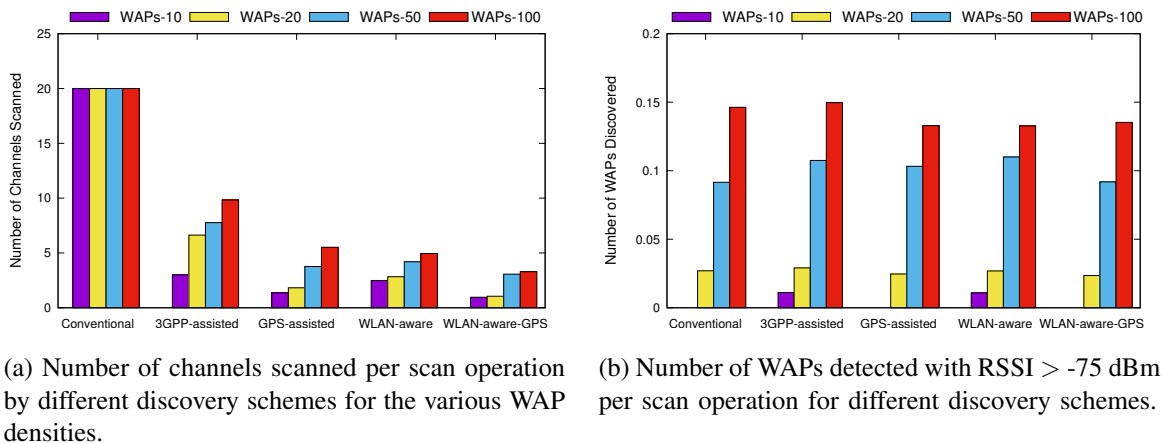


Fig. 7: Discovery performance of different discovery schemes.

5) Proposed WLAN-aware-GPS Scheme: WLAN-aware discovery scheme with the GPS coordinates of the UE available for position estimation.

Here, WLAN-aware and WLAN-aware-GPS discovery schemes are presented in Section III of this paper. 3GPP-assisted and GPS-assisted schemes are presented in [22] and [23], respectively.

Fig 5 depicts the cumulative probability distributions of the power consumption values obtained per scan interval for the UE. As evident from the figures, the Conventional scheme results in highest power consumption, while, WLAN-aware scheme consumes the least power. The Conventional scheme consumes about 250 mW power for low WAP spatial density, with the value rising to 400 mW as the density increases. The variation in the power consumption with varying WAP spatial density, even with the same number of channel scans, is due to different power consumption of the UE in *ActiveListen* and *ActiveReceive* states of the WLAN interface.

The power consumption of the WLAN-aware scheme ranges from 50 mW to 100 mW, as the WAP spatial density increases. Note that the power consumption value of WLAN-aware scheme is the lowest for the case of 50 and 100 WAPs deployment scenario. This can be explained due to the fact that the UE observes more frequent discoveries, when the WAP spatial density is high. Hence, the position error of the UE is quite small. This results in near optimal channel selection in the *Initial Channel Selection*. On the other hand, when the WAP spatial density is low, the

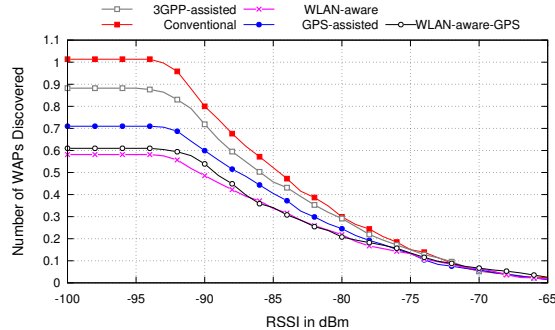


Fig. 8: Discovery performance of different discovery schemes for 100 WAPs deployment scenario.

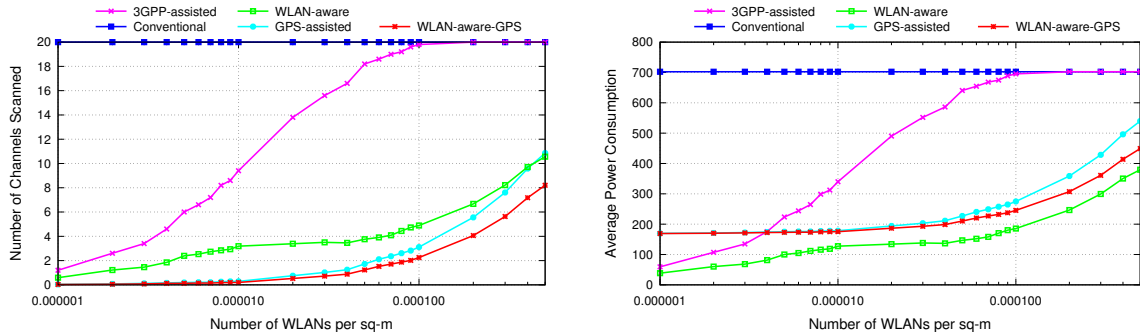
position error is significantly high and hence, the scheme selects more number of channels for scan. Fig 6 illustrates the position error component of WLAN-aware scheme, determined using Algorithm 1, for 20 WAPs and 100 WAPs deployment scenario.

From Fig 5, it can be observed that the WLAN-aware-GPS and GPS-assisted schemes have identical power consumption values, for small WAP spatial density. But, the WLAN-aware-GPS performs significantly better than the GPS-aware scheme, for the scenario of 100 WAPs deployment. This can be attributed to the fact that, for small WAP spatial density scenario, the number of channels scanned by both schemes is significantly low and the main power consuming component is the GPS operation. When the WAP spatial density is increased, the increase in the number of channels scanned by the GPS-assisted scheme results in higher power consumption compared to the WLAN-aware-GPS scheme. Moreover, for the scenario of 100 WAPs deployment, the power consumption of GPS-assisted scheme is identical to that of conventional scheme, due to high number of channel scans. Hence, GPS-assisted scheme may not provide sufficient improvement over the Conventional scheme as the WAP spatial density increases.

The 3GPP-assisted scheme has significantly lower power consumption values compared to the GPS-assisted scheme. But, the power consumption value steadily increases for higher WAP spatial density. The 3GPP-assisted scheme consumes about 50 mW of power for low values of WAP spatial density, the value increases to about 300 mW for the scenario of 100 WAPs deployment.

Fig 7a shows the number of channels scanned per scan operation by the discovery schemes evaluated. It can be observed that the WLAN-aware-GPS performs the least number of channel scans compared to other schemes. The GPS-assisted scheme performs smaller number of channel scans compared to WLAN-aware scheme, for the case of low WAP density scenarios. But, the WLAN-aware scheme shows significant improvements over the GPS-assisted scheme, for the case of 100 WAPs deployment. The reason for this is that when the WAP spatial density is low, infrequent WLAN discoveries lead to significant position error for WLAN-aware scheme and hence, *Initial Channel Selection* takes more number of WAPs in consideration. But, the position error component is relatively small for higher values of WAP densities, which leads to more accurate position estimation.

Fig 7b, shows the discovery performance of the schemes analyzed. The values on y-axis represent the number of WAPs detected by the UE per scan operation with signal strength



(a) Number of channels scanned per scan operation by different discovery schemes as a function of WAP spatial density.

(b) Average power consumption of different discovery schemes as a function of WAP spatial density.

Fig. 9: Discovery performance of different discovery schemes.

greater than S_{enter} . It can be observed that the discovery performance of each of the schemes is similar to that of the Conventional scheme.

Fig 8 depicts the discovery performance for the scenario where 100 WAPs are deployed in the region. The y-axis indicates the number of WAPs detected by the UE per scan operation, with observed RSSI greater than the RSSI value indicated by the x-axis. It can be seen that the discovery performance of the schemes differ substantially, for low RSSI values. But, the difference in the discovery performance diminishes, for RSSI values greater than -75 dBm. Since, the 3GPP-assisted scheme scans each operating channel of the WAPs that are deployed within the coverage of the serving base station, the discovery performance of the 3GPP-assisted scheme is expected to be similar to that of the Conventional scheme. It can also be observed that the GPS-assisted scheme is not able to detect some of the WAPs (discovered by the Conventional scheme). This can be explained by noting that due to inaccurate position information of the WAPs, the UE may not consider WAPs for scanning which are around D_r distance from the UE. Moreover, the transmission range of some of the WAPs can exceed D_r , but, the UE does not consider such WAPs for scan operation, if their distance is greater than D_r . Since, the UE is positioned near the edge of transmission range of such WAPs, the UE will experience very low RSSI from the given WAPs. Hence, the GPS-assisted scheme shows loss in discovery performance compared to the Conventional Scheme. The WLAN-aware and WLAN-aware-GPS avoid scanning operating channels of the WAPs which are not likely to satisfy offload criteria and hence, have lower number of discoveries with observed RSSI less than -75 dBm.

D. Simulation Analysis

Although, the conducted field experiments have shown enhanced performance for the WLAN-aware scheme, we have also used simulation study to ascertain the performance gains of the scheme, for wide range of WAP spatial density. The simulations are performed in Network Simulator 3 (ns-3) which is a link level simulator.

A pedestrian mobility model is considered for simulations, which is based on 800×1200 m^2 map of IIT Bombay campus. The model comprises of a network of intersection nodes and the links between them representing roads on which a user may navigate. A subset of these intersection nodes are selected as hot spot locations, i.e., points of interest for the user. At the

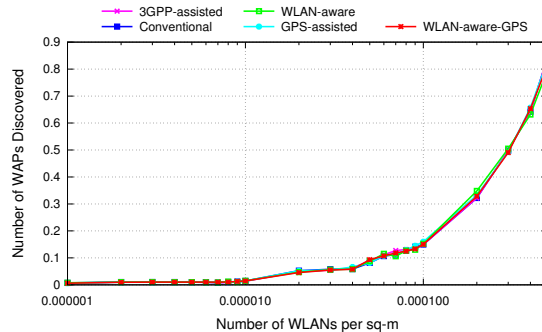


Fig. 10: Number of WAPs discovered (with $\text{RSSI} > S_{enter}$) per scan operation vs. WAP spatial density.

start of the simulation, the user randomly selects a hot spot node as the destination node and determines the shortest route to reach there from its current position. The user travels with a constant speed along the selected route and does not halt at any intermediate intersection node. After reaching the destination node, the user re-initiates the same procedure with current position of the user becoming the source node.

We have considered a Poisson Point distribution model for WAP deployment. WAPs operating in each of the channels supported by the UE's WLAN interface are deployed using a Poisson Point distribution with WAP spatial density, i.e., WAPs per m^2 , given by λ/n . The value of λ ranges from 10^{-6} to $5 * 10^{-4}$ and n represents the total number of channels supported by the WLAN interface of the UE. As such, the number of WAPs in the entire region ranges from 0 to 500. All the WAPs are assumed to be in the coverage of a single 3GPP base station. We use the same parameter values as shown in Table I, for the simulations. Each simulation set for a given value of λ consists of 5 iterations, where in each iteration, a user travels within the region for a duration of 1 hr.

Fig 9a depicts the number of channels scanned per scan operation by the discovery schemes analyzed as a function of WAP spatial density. The number of channels scanned by the 3GPP-assisted scheme rises sharply with the increasing WAP spatial density, as compared to other discovery schemes. The number of channels scanned per scan operation saturates to 20 channels, when the WAP spatial density reaches the value 0.0001 WAPs/ m^2 . Thereafter, the 3GPP-assisted scheme has identical performance to that of the Conventional scheme. Also, note that the GPS-assisted and the WLAN-aware-GPS schemes have the least number of channel scans for low values of WAP spatial density. But, the difference diminishes between the GPS-assisted and the WLAN-aware scheme, as the WAP spatial density increases. This observation corroborates with the field experimental results discussed in the previous section.

Fig 9b depicts the power consumption of the discovery schemes, as the WAP spatial density varies. The WLAN-aware scheme demonstrates the highest power saving. Though, the GPS-assisted and the WLAN-aware-GPS perform the least number of channel scans, the GPS module operation results in high power consumption for the schemes. The 3GPP-assisted scheme, for low values of WAP spatial density, has lower power consumption values in comparison to the GPS-assisted and the WLAN-aware-GPS schemes. But, as the spatial density of the WAP steadily increases, the higher number of channels scanned by the 3GPP-assisted scheme leads to high power consumption values.

Fig 10 shows the discovery performance of the discovery schemes. The y-axis values indicate the number of discoveries per scan operation with observed RSSI greater than -75 dBm, for varying WAP spatial density. As expected from the observation in the previous section, all the schemes show identical discovery performance. Hence, using the power consumption observations, it can be concluded that the WLAN-aware scheme is the most energy efficient, as compared to the other discovery schemes. Moreover, if the GPS coordinates of the UE are available beforehand, then the WLAN-aware-GPS results in the least number of scanned channels for a mobile user, thereby, leading to small power consumption overhead.

E. Power Consumption Modeling

In this section, we provide a power consumption model for the WLAN-aware discovery scheme. We assume that WAPs, operating in frequency $f_i \in F$, are distributed as Poisson Point process (PPP) with spatial density given by ρ_{f_i} , i.e., number of WAPs per m^2 , and is independent of the distribution of WAPs operating on frequency $f_j \forall j \neq i$. As such, the collective set of WAPs operating in any channel is also distributed as Poisson Point with spatial density given by,

$$\rho = \sum_i \rho_{f_i}.$$

The consideration of WAP distribution as a PPP is supported by the measurement study conducted in [32].

The average power consumption for a discovery scheme is provided in [1]. As, power consumption values of *Active Listen* and *Active Receive* state in many WLAN interfaces do not differ significantly, the expression of average power consumption can be reduced to,

$$E[P_{scan}] = \frac{a \cdot E[N_{ch}]}{T_s} + b. \quad (2)$$

Here, N_{ch} corresponds to the number of channels scanned per scan operation and T_s is the time interval to scan the selected channels. The value of a depends on the time interval to scan one channel and the power consumption in *ActiveReceive* state, whereas, the value of b corresponds to the power consumption in *Sleep* state of the WLAN interface. The values of a and b can be determined by observing the power consumption profile of scan operation for varying scan interval and number of channels to be scanned in each operation. Hence, estimating the average power consumption of a discovery scheme corresponds to determining the expected value of N_{ch} .

Proposition 1: Let the user be traveling with a speed of v m/s. Let T_s denote the scan interval. The expected number of channels scanned per scan operation for the WLAN-aware scheme is given by,

$$E[N_{wlan}] = \left(N_1 + N_2 \cdot \frac{vT_s}{D_1} + N_3 \cdot \frac{vT_s}{D_2} \right), \quad (3)$$

where,

$$N_1 = \sum_{f_i \in F} (1 - e^{-\rho_{f_i} \pi D_h^2}), \quad (4)$$

$$N_2 = \sum_{f_i \in F} (1 - e^{-\rho_{f_i} \pi (D_r^2 - D_h^2)}) \cdot e^{-\rho_{f_i} \pi D_h^2}, \quad (5)$$

$$N_3 = \sum_{f_i \in F} \left(\int_{\Delta=0}^{\infty} f_e(\Delta) (1 - e^{-\rho_{f_i} \pi ((D_r + \Delta)^2 - D_h^2)}) \right) \cdot e^{-\rho_{f_i} \pi D_r^2}. \quad (6)$$

Here, $f_e(\Delta)$ is the probability density function of the UE's estimated position error. The value of D_h corresponds to the expected distance of a WAP from the UE, when, RSSI from the given WAP as observed by the UE is S_{high} . The value can be determined using a known propagation loss model.

Proof: Let Δ denote the estimated position error of the UE. *Initial Channel Selection* selects the operating channels of the WAPs that lie at distances less than $D_r + \Delta$, from the current estimated position of the UE. The UE scans the selected channels with different periodicity based on the previously observed RSSI values. The criteria for selecting the periodicity of scanning each channel can be summarized as,

- 1) If channel $f \in InitSelect$ satisfies $S[f] \geq S_{high}$, then, scan f every T_s interval,
- 2) Else if channel $f \in InitSelect$ satisfies $S[f] < S_{high}$, then, scan f after every D_1/v interval,
- 3) Else if channel $f \in InitSelect$ satisfies $S[f] = NaN$, then, scan f after every D_2/v interval.

Using the above criteria, the expected number of channels scanned per scan operation is determined as,

$$E[N_{ch}] = N_1 + N_2 \cdot \frac{vT_s}{D_1} + N_3 \cdot \frac{vT_s}{D_2}, \quad (7)$$

where, N_1 , N_2 and N_3 represent the expected number of channels which satisfy Condition 1, 2 and 3, respectively. Now, for PPP with WAP spatial density given by ρ , the probability that at least one WAP is present in an area A is given as,

$$P[A] = 1 - \exp(-\rho A). \quad (8)$$

Let, d be the distance between the UE and a given WAP, and S_{wap} be the RSSI observed by the UE from the given WAP. Since, the observed RSSI from a WAP decreases with increasing distance between the UE and the WAP, the expression $S_{wap} \geq S_{high}$ can be approximated as $d \leq D_h$. The value of D_h can be determined using a known propagation loss model. Therefore, using Equation 8, the value of N_1 is determined as,

$$N_1 = \sum_{f_i \in F} (1 - e^{-\rho f_i \pi D_h^2}). \quad (9)$$

Using similar notion, the criteria $S_{wap} < S_{high}$ and the condition that a WAP is not detected by the UE, can be approximated as $d \in (D_h, D_r)$ and $d \in (D_r, D_r + \Delta)$, respectively. Again, using PPP, the probability that at least one WAP is deployed in an area A_1 such that no WAP is present in area A_2 , with $A_2 \subseteq A_1$ and the WAP spatial density ρ , is given by,

$$P = (1 - e^{-\rho(A_1 - A_2)}) \cdot e^{-\rho A_2}.$$

Using above, we can compute the values of N_2 and N_3 as,

$$N_2 = \sum_{f_i \in F} (1 - e^{-\rho f_i \pi (D_r^2 - D_h^2)}) \cdot e^{-\rho f_i \pi D_h^2}, \quad (10)$$

$$N_3 = E\left[\sum_{f_i \in F} (1 - e^{-\rho f_i \pi ((D_r + \Delta)^2 - D_r^2)}) \cdot e^{-\rho f_i \pi D_r^2}\right]. \quad (11)$$

Combining Equations 7, 9, 10 and 11, we can derive the expression for the expected number of channels scanned for WLAN-aware scheme.

Proposition 2: For the WLAN-aware discovery scheme, the probability density function of the estimated position error of the UE is given by,

$$f_e(r) = \begin{cases} 2\rho\pi r \cdot e^{-\rho\pi r^2} & r \leq D_r, \\ \delta(r - D_r - kvT_s) \cdot e^{-\rho\pi D_r^2} \left(\sum_{i=k}^{\infty} \frac{P_o(i)}{i} \right) & r > D_r, k > 0, \end{cases}$$

where, $\delta(r)$ represents Dirac delta function and

$$P_o(i) = e^{-2D_r v \rho i T_s} (1 - e^{-2D_r v \rho T_s}).$$

Proof: The position error of the UE is determined by the state of the UE in the context of WAP discoverability, i.e., *InRange* and *OutOfRange*. The UE is said to be in *InRange* state, if there exists a WAP within D_r distance from the UE. Thus, in *InRange* state, the UE is able to receive signal from at least one WAP. The UE is said to be in *OutOfRange* state, if no WAP exists within D_r distance from the UE and hence, the UE is not able to detect any WAP signal. When the UE is in *InRange* state, the estimated position error of the UE is given by the distance between the UE and the nearest WAP. Assuming time ergodicity and PPP, the probability density function of the distance between the UE and the nearest WAP can be derived as,

$$f(r) = 2\rho\pi r \cdot e^{-\rho\pi r^2}.$$

Since, for *InRange* state of the UE, the distance between the UE and the nearest WAP is less than D_r , the probability distribution function for the estimated position error of the UE is given by,

$$f_e(r) = 2\rho\pi r \cdot e^{-\rho\pi r^2} \quad \text{if } r \leq D_r. \quad (12)$$

When the UE enters *OutOfRange* state, the initial estimated position error of the UE is D_r . For the time UE stays in *OutOfRange* state, the position error of the UE increments by vT_s after each T_s time interval. Hence, if the UE stays in *OutOfRange* state for n consecutive scan intervals, the estimated position error of the UE is $D_r + kvT_s$ for $1/n \forall k \leq n$ fraction of time. Moreover, it has been shown in [14] that the time of stay of UE in *OutOfRange* state is exponentially distributed, i.e., $t_o \sim \exp(2D_r v \rho)$. Here, v is the speed of the user and D_r is the transmission range of the WLAN. Hence, the probability of UE staying in *OutOfRange* state for n consecutive scan intervals can be determined as,

$$P_o(n) = e^{-2D_r v \rho n T_s} (1 - e^{-2D_r v \rho T_s}). \quad (13)$$

Since, the probability of UE being in *OutOfRange* state is $e^{-\rho\pi D_r^2}$, the probability density function of the estimated position error of the UE is given by,

$$f_e(r) = \delta(r - D_r - kvT_s) \cdot e^{-\rho\pi D_r^2} \cdot \left(\sum_{i=k}^{\infty} \frac{P_o(i)}{i} \right) \quad \text{if } r > D_r, k > 0 \quad (14)$$

Using Equation 12, 13 and 14, we can derive the expression for the probability density function of the estimated position error of the UE.

For the scenario of high WAP spatial density, $f_e(r)$ is expected to be high for small values of r , due to more frequent WAP discoveries. On the other hand, for small values of WAP spatial density, the non-zero values of $f_e(r)$ are expected to be evenly distributed over a wide range of values of r .

Using the proposition, it can be inferred that for low WAP spatial density scenario, the values of N_1 and N_2 are significantly small, but, higher error in the position estimation of the UE leads

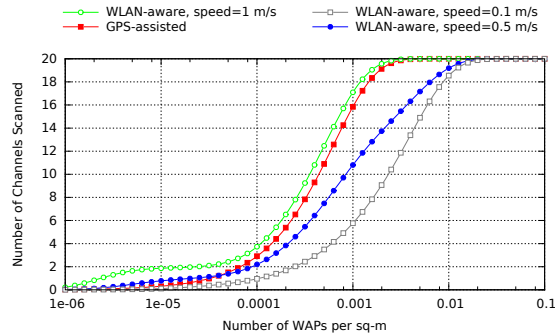


Fig. 11: Number of channels scanned per scan operation as a function of WAP spatial density and user speed.

to higher value of N_3 . Hence, the discovery schemes, which use the assistance of GPS module of the UE, are expected to have lower number of channel scans compared to WLAN-aware scheme. As the WAP spatial density increases, higher accuracy in position estimation results in optimized selection of channels for N_3 . Consequently, the WLAN-aware scheme is expected to perform lower number of channel scans as compared to other discovery schemes.

Using similar methodology used for determining the expected number of channels scanned by the WLAN-aware scheme, we can determine the expected number of channels scanned by the GPS-assisted scheme. The average number of channels scanned per scan operation for the GPS-assisted scheme is given by,

$$E[N_{gps}] = \sum_{f_i \in F} 1 - e^{(-\rho_{f_i} \cdot \pi D_r^2)}.$$

Fig 11 shows the trend for the number of channels scanned by the WLAN-aware scheme with varying WAP spatial density and different user speeds. We have also plotted the number of channels scanned by the GPS-assisted scheme for performance comparison. It can be seen that the WLAN-aware scheme follows a similar trend as the results obtained from the simulation study. The WLAN-aware scheme performs slightly higher number of channel scans as compared to the GPS-assisted scheme, for low values of WAP spatial density. As WAP spatial density increases, the WLAN-aware scheme shows similar performance to that of the GPS-assisted scheme, when user speed is 1 m/s. Decreasing the user speed leads to significant performance improvement of the WLAN-aware scheme over the GPS-assisted scheme. This is because, the scan periodicity of channels corresponding to N_2 and N_3 is very low, for small values of user speed.

V. CONCLUSIONS

In this paper, we have proposed a WLAN-aware discovery scheme for heterogeneous 3GPP LTE networks. The WLAN-aware scheme differs from the discovery scheme implemented in most of the commercially available UEs, which periodically scans all the channels supported by the WLAN interface of the UE, by selecting the channels based on their likelihood of providing offload opportunities. The scheme uses past scan results to evaluate the proximity of WLANs deployed by the 3GPP network operator. We have implemented various discovery schemes along with the WLAN-aware scheme, on an Android phone, for performance evaluation. Further, we have also conducted simulation study in ns-3 and analytical modeling for comprehensive

performance evaluation of the schemes. Our results demonstrate that the WLAN-aware discovery scheme outperforms other solutions proposed in the literature, in terms of power consumption, without compromising discovery performance. The field experimental and simulation results have been justified through the analytical model of power consumption also.

ACKNOWLEDGMENT

This research work has been funded through a grant on LTE-WiFi Inter-working from Department of Electronics & Information Technology (DeitY), Government of India. We thank Punit Rathod for his contributions towards the simulations presented in this paper.

REFERENCES

- [1] P. S. Deogun, S. Ranjan, P. Rathod, A. Karandikar, and N. Akhtar, "Energy Efficient IEEE 802.11 WLAN Discovery for Heterogeneous 3GPP LTE Network," in *WCNC*, Mar 2015, pp. 1392–1397.
- [2] 3GPP TS 36.889 v13.0.0, "Feasibility Study on Licensed-Assisted Access to Unlicensed Spectrum," Available online at <http://www.3gpp.org/dynareport/36889.htm>, Jun 2015.
- [3] 3GPP TS 23.234 v12.0.0, "3GPP System to Wireless Local Area Network (WLAN) Interworking; System Description," Available online at <http://www.3gpp.org/DynaReport/23234.htm>, Sep 2014.
- [4] IEEE 802.11-2012, Part 11, "Wireless LAN Medium Access Control (MAC) and Physical Layer (PHY) Specifications," Mar 2012.
- [5] A. Roy and A. Karandikar, "Optimal Radio Access Technology Selection Policy for LTE-WiFi Network," in *WiOpt*, Apr 2015, pp. 291–298.
- [6] S. Ranjan, N. Akhtar, M. Mehta, and A. Karandikar, "User-based Integrated Offloading Approach for 3GPP LTE-WLAN Network," in *NCC*, Feb 2014, pp. 1–6.
- [7] S. Chiaravalloti, F. Idzikowski, and L. Budzisz, "Power Consumption of WLAN Network Elements," Telecommunication Networks Group, Technical University Berlin, Tech. Rep., 2011.
- [8] H. Wu, K. Tan, J. Liu, and Y. Zhang, "Footprint: Cellular Assisted Wi-Fi AP Discovery on Mobile Phones for Energy Saving," in *ACM International Workshop on Experimental Evaluation and Characterization*, Sep 2009, pp. 67–76.
- [9] R. Khalili, D. L. Goeckel, D. Towsley, and A. Swami, "Neighbour Discovery with Reception Status Feedback to Transmitters," in *MobiHoc*, Mar 2010, pp. 1–9.
- [10] M. J. McGlynn and S. A. Borbash, "Birthday Protocols for Low Energy Deployment and Exible Neighbour Discovery in Ad Hoc Wireless Networks," in *INFOCOM*, Feb 2001, pp. 1–6.
- [11] J. R. Jiang, Y. C. Tseng, and T. H. Lai, "Quorum-based Asynchronous Power-saving Protocols for IEEE 802.11 Ad Hoc Networks," in *IEEE ICPP*, Oct 2003, pp. 257–264.
- [12] W. Sun, Z. Yang, K. Wang, and Y. Liu, "Hello: A Generic Exible Protocol for Neighbour Discovery," in *INFOCOM*, May 2014, pp. 540–548.
- [13] Y. Choi and S. Choi, "Service Charge and Energy-Aware Vertical Handoff in Integrated IEEE 802.16e/802.11 Networks," in *INFOCOM*, May 2007, pp. 589–597.
- [14] K.-H. Kim, A. Min, D. Gupta, P. Mohapatra, and J. Singh, "Improving Energy Efficiency of Wi-Fi Sensing on Smartphones," in *INFOCOM*, Apr 2011, pp. 2930–2938.
- [15] D. Triantafyllopoulou, T. Guo, and K. Moessner, "Energy Efficient ANDSF-assisted Network Discovery for Non-3GPP Access Networks," in *CAMAD*, Sep 2012, pp. 297–301.
- [16] S. Thota, R. Anantharangachar, and B. Mukherji, "intelliSENSE: Location-Based Wi-Fi Sensing for Energy Efficiency in Smart Mobile Devices," in *IEEE ANTS*, Apr 2012, pp. 12–17.
- [17] G. Castignani, A. Arcia, and N. Montavont, "A Study of the Discovery Process in 802.11 Networks," in *ACM Sigmobile - Mobile Computing and Communications Review, Volume 15 Issue 1*, Jan 2011, pp. 25–36.
- [18] Z. Chang, O. Alanan, E. H. Ong, and J. Knecht, "Enhanced Channel Scanning Schemes for Next Generation WLAN System," in *ICCC*, Aug 2012, pp. 676–681.
- [19] D. W. Waters, M. F. Mansour, and A. E. Xhafa, "WLAN Scanning Strategies for RSSI-based Positioning," in *GLOBECOM*, Dec 2013, pp. 493–497.
- [20] S. Shin, A. G. Forte, and H. G. Schulzrinne, "Seamless Layer-2 Handoff using Two Radios in IEEE 802.11 Wireless Networks," in *Columbia University Computer Science Technical Reports*, Jun 2006, pp. 1–2.
- [21] C. Liu and J. Wang, "Optimal Scanning Strategy for Vehicular Wi-Fi," in *IEEE International Conference on Computer Science and Automation Engineering*, Jun 2011, pp. 193–197.
- [22] K. Doppler, C. Ribeiro, and J. Knecht, "On Efficient Discovery of Next Generation Local Area Networks," in *WCNC*, Mar 2011, pp. 269–274.
- [23] W.-S. Lim, D.-W. Kim, Y.-J. Suh, and J.-J. Won, "Efficient WLAN Discovery Schemes Based on IEEE 802.21 MIH Services in Heterogeneous Wireless Networks," in *GLOBECOM*, Nov 2008, pp. 1–5.

- [24] 3GPP TS 36.331 v12.6.0, “Evolved Universal Terrestrial Radio Access (E-UTRA); Radio Resource Control (RRC); Protocol specification,” Available online at <http://www.3gpp.org/DynaReport/36331.htm>, Jul 2015.
- [25] M. Mehta, N. Akhtar, and A. Karandikar, “Enhanced Mobility State Estimation in LTE HetNets,” in *NCC*, Mar 2015, pp. 1–6.
- [26] T. Kos, M. Grgic, and J. Kitarovic, “Location Technologies for Mobile Networks,” in *IWSSIP*, Jun 2007, pp. 319–322.
- [27] V. Otsason, A. Varshavsky, A. LaMarca, and E. de Lara, “Accurate GSM Indoor Localization,” in *UbiComb*, Sep 2005, pp. 141–158.
- [28] Intel Corporation. (2014, Apr) Idle Mode Procedures of WLAN/3GPP Radio Interworking for LTE. Available online at www.3gpp.org/ftp/tsg_ran/WG2_RL2/TSGR2_85bis/Docs/R2-141846.zip.
- [29] Ericsson, Huawei, HiSilicon, Sony and LG Electronics Corporation. (2014, Apr) Considerations Around WLAN Signal Measurements. Available online at www.3gpp.org/ftp/tsg_ran/WG2_RL2/TSGR2_85bis/Docs/R2-141705.zip.
- [30] 3GPP TS 24.312 v12.6.0, “Access Network Discovery and Selection Function (ANDSF) Management Object (MO),” Available online at <http://www.3gpp.org/DynaReport/24312.htm>, Sep 2014.
- [31] Qualcomm, “Trepn power profiler,” Available online at <https://developer.qualcomm.com/software/trepn-power-profiler>, accessed: 2015-09-24.
- [32] D. Qiu, D. D. Lorenzo, S. Lo, D. Boneh, and P. Enge, “Physical Pseudo Random Function in Radio Frequency Sources for Security,” in *Proceedings of the International Technical Meeting of The Institute of Navigation*, Jan 2009, pp. 84–92.