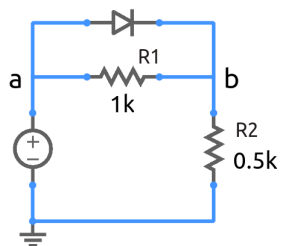


ee101_diode_circuit_2.sqproj



For the diode circuit shown in the figure, assume the turn-on voltage of the diode to be 0.7 V .

Exercise Set

1. Plot the output voltage (V_b) versus the input voltage (V_a) for $-5\text{ V} < V_a < 5\text{ V}$.
2. Plot the diode current versus the input voltage in the same range.
3. Compare your plots with simulation results.