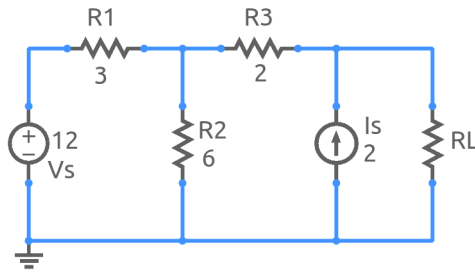


ee101_maxpwr_1.sqproj



Maximum power transfer example

Exercise Set

In the circuit shown in the figure,

1. Find R_L for which the power absorbed by R_L is maximum.
2. What is the maximum power that can be transferred to R_L ?
3. Simulate the circuit, and plot P_L (power absorbed by R_L) versus R_L to verify the answer you obtained in 2.