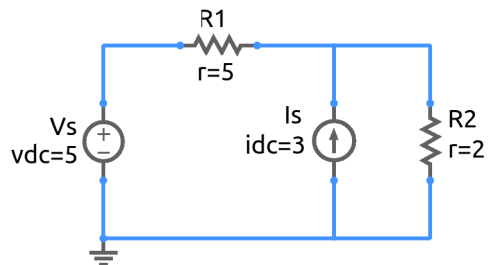


ee101_network_1.sqproj



In the circuit shown in the figure, we are interested in finding the currents I_{R_1} and I_{R_2} .

Exercise Set

1. Convert the I_S - R_2 combination into its Thevenin equivalent, and redraw the circuit.
2. Find I_{R_1} in the redrawn circuit and using that, find I_{R_2} in the original circuit.
3. Check your values against simulation results.